

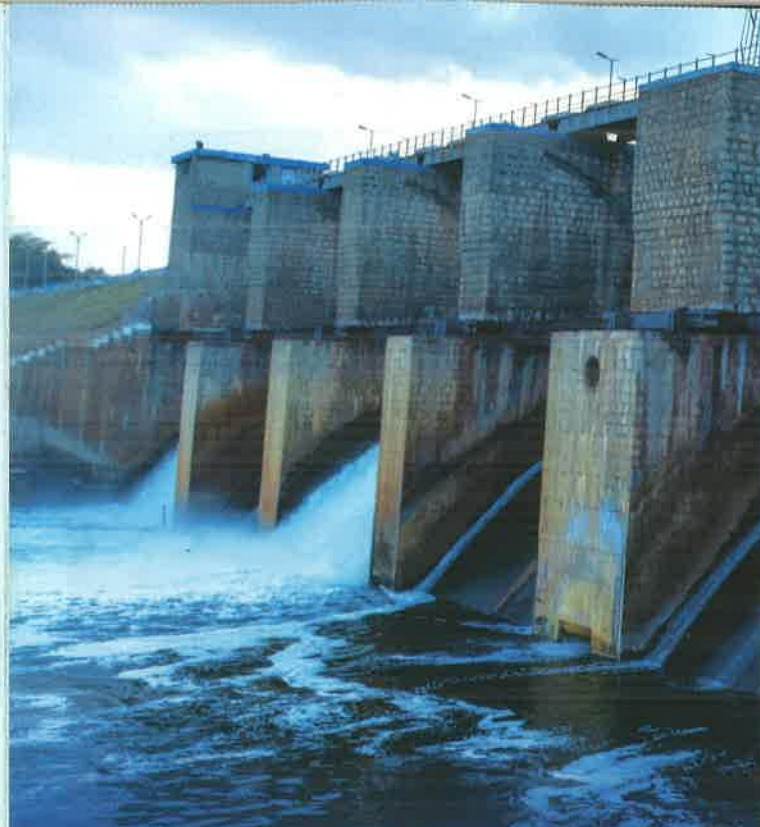
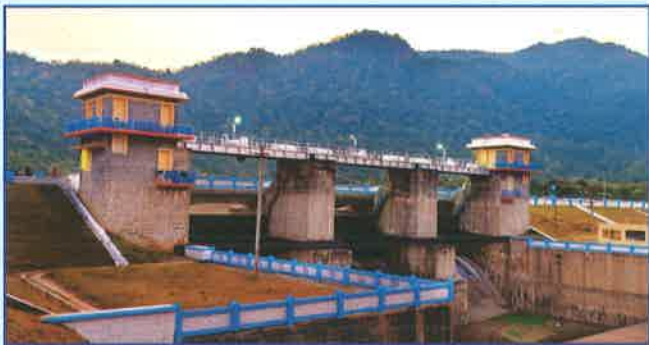
## Chitheri Hills

It is situated at a distance of 60 kms from Dharmapuri. The inhabitants are tribal people. The climate here is pleasant to visit throughout the year.



## Vaniar Dam

It is situated at a distance of 48 kms from Dharmapuri near Pappireddipatti. It is a picnic spot. The green vegetation around the dam and the hill area is worthy for sight-seeing. It is almost surrounded on all sides by hills, mainly Shervorayan Hills and Kalrayan Hills. Vaniyar river is a major tributary of Ponnayar. Nearest railway station is Bommmidi (16 km).



## TOURIST OFFICER,

Government of Tamil Nadu Tourist Office,  
DRDA Complex,  
Collectorate Campus, Dharmapuri - 636705.  
Phone : 04342 - 230705  
Cell : 8939896398



**DEPARTMENT OF TOURISM**  
Government of Tamil Nadu

Tamilnadu Tourism Complex,

No : 2, Wallajah Road, Chennai : 600 002.

Phone : 91-44-2533 3333 / 444 / 857 / 286 / Fax : 91-44-2533 3385

Toll Free: 1800 4253 111, Email: [dotdepartment@gmail.com](mailto:dotdepartment@gmail.com)

Website: [www.tamilnadutourism.org](http://www.tamilnadutourism.org) / [www.ttdconline.com](http://www.ttdconline.com)

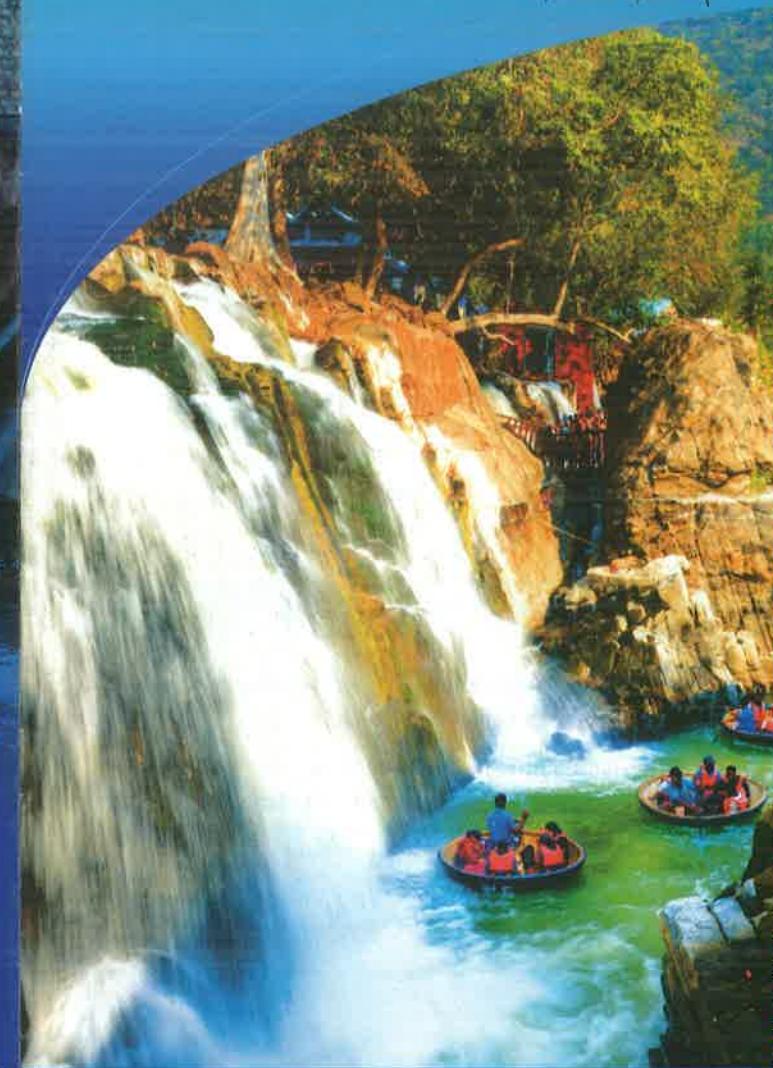


Active media pictures, Chennai

Incredible India

enchancing  
tamil nadu

experience yourself



# Dharmapuri

## TAMIL NADU - INDIA

## Dharmapuri District

### INTRODUCTION

Dharmapuri was known as Thagadur in Sangam age. King Athiyaman ruled over this vast area. The modern Dharmapuri district was formed in 1965. It was separated from the erstwhile combined district of Salem. The district is primarily an agriculture oriented district. Apart from the agricultural products, it plays a pivotal role in the production and distribution of dairy products.

### General Information

Area	: 4497 Sq.Km.
Population	: 15,06,843 (2011 Census)
Rainfall	: 902.1 mm
Languages	: Tamil, English
Climate	: Tropical

### Transport

**Bus:** NH 7 connects Chennai, Bengaluru & other cities. Bus Services to all major cities and towns.

**Train:** Dharmapuri (Salem-Bengaluru)  
Morappur (Chennai-Salem-Coimbatore)

**Air:** Salem(45Kms), Bengaluru (160kms)



## Hogenakkal

Hogenakkal is the most important and popular tourist center in this district. The perennial river Cauveri enters Tamil Nadu at this place. Hogenakkal in Kannada means smoking rock, since water gushes through the rocks and water droplets splash like smoke from the rocks. The breathtaking view of the Cauveri and the numerous waterfalls at this place attract lakhs of tourists to Hogenakkal throughout the year. It is situated at a distance of 46 kms from Dharmapuri. The nearest Railhead is Dharmapuri.



Moreover a dip in the river Cauveri is considered to be very holy. The Parisal (Coracle ride) is another attraction of this place. Aadiperukku festival during the month of August every year congregates lakhs of pilgrims to Hogenakkal. One can see the panoramic view of waterfalls and river Cauveri from the Hanging Bridge. This breathtaking view attracts a large number of visitors.



## Adhiyaman Kottai

It is situated at a distance of 8 kms from Dharmapuri. This fort is in memory of the Thagadur (Old name of Dharmapuri) Adhiyaman King, who gave large donations to many temples and ruled over a large area.



## Theerthamalai

Theerthamalal is a famous pilgrim center and Theerthagiriswarar (Siva) Temple is situated on-a hillock 65 kms from Dharmapuri. There are springs on this hillock which are considered holy by the pilgrims. This temple was built in 7th century and contributions were made by the Chola and Pandya kings. Several inscriptions can be found in the temple. Poet Saint Arunagirinadhar referred this temple in his compositions. Masi month festival is celebrated during February-March, with a procession of the presiding deity. Thousands of pilgrims participate in the festival.





Timings : 6.00 am to 1.00 pm, 4.00 pm to 8.00 pm  
 Contact No : 04346 - 253599

### Subramania Siva Memorial (Paparapatti)

A memorial has been erected at this place in memory of the great freedom fighter and nationalist Subramania Siva. A pictorial exhibition is also arranged at the memorial in which the life and achievements of the freedom fighter is depicted. This Memorial is under the control of Information and Public relations department. It is 25kms from Dharmapuri. Timing: 10 AM to 6 PM all days (including Saturdays and Sundays) except National and State holidays.



### Government Museum

The site Museum is situated near main bus stand in the center of Dharmapuri town. A large number of archaeological collections are available at this museum, which throw light on the history of the Thagadur kings and the Cholas. This museum is managed by the State Archaeological department (Timings 10 AM to 5:45 PM. Entrance fee: Adult Rs.5/- Children Rs, 3/-)

### Thoppur Dargah

This Dargah is situated on the Dharmapuri-Salem highway, at a distance of 25 kms from Dharmapuri. A large number of pilgrims visit this dargah on all days, cutting across all religions and faiths both inside and outside the state. Thursdays and Sundays are very important, as special prayers are offered and Annadhanam is also arranged. The Santhanakoodu festival during Muharram month is very famous here.



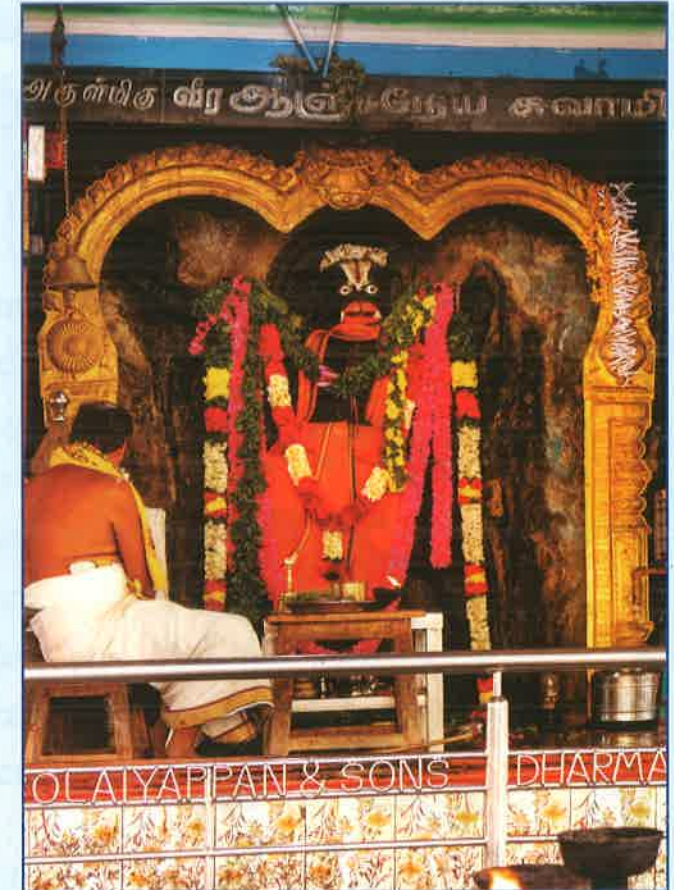
### Crocodile Park

The forest Department maintains Crocodile Park here, which attracts a large number of visitors. Hundreds of crocodiles are rehabilitated here in natural surroundings. Timings : 9 AM to 6 PM. Entry fee Rs. 5/-



### Anjaneya Swamy Temple

This temple is located at Muthampatti a distance of 25 kms on the way to Salem from Dharmapuri. This temple is situated in the midst of forests. The deity is worshiped by a large number of devotees from nearby areas and also pilgrims from Karnataka.



### Kalabairavar Temple

This temple is situated on the Dharmapuri-Salem road and is 8 kms away from Dharmapuri. This is a famous pilgrim center in Dharmapuri. A large number of devotees from the neighboring State of Karnataka visit this temple on Saturdays and festival days.

# TOURIST MAP OF DHARMAPURI



Timings : 8.00 am to 12.00 pm, 1.30pm to 7.30 pm  
 Contact No : 04342 - 244123.

## Vathalmalai

It is situated at a distance of 25 kms from Dharmapuri at an altitude of around 1000 meters above sea level. Vathalmalai consists of smaller villages like Chinnankadu, Periyur, Naikkanur etc. The climate prevailing here is pleasant throughout the year. Hence Coffee, Pepper and other vegetation suitable for the climate is grown here. It is inhabited by Tribal people.



Cartography: P.Srinivasan, 9444937716, 9444657716.

Scale : 1 cm = 6 kms Appx.